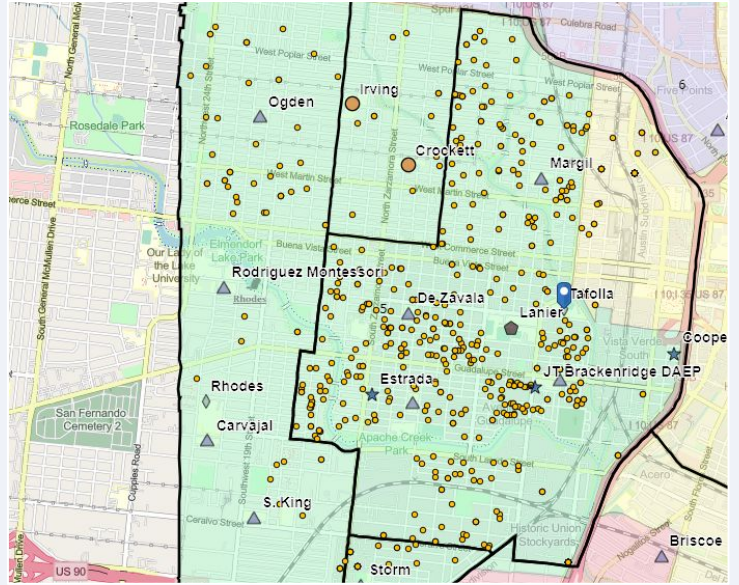


# Tafolla Middle School

## SCHOOL OVERVIEW

<b>Location:</b>	1303 W Cesar E Chavez Blvd San Antonio, TX 78207
<b>Grades:</b>	6-8
<b>Enrollment:</b>	702
<b>Poverty Index:</b>	78%
<b>Trustee/SMD:</b>	Torres - District 5
<b>HS Feeder Pattern:</b>	Lanier
<b>Recommendation:</b>	<ul style="list-style-type: none"> <li>No rightsizing-related actions make a significant impact on this school.</li> </ul>

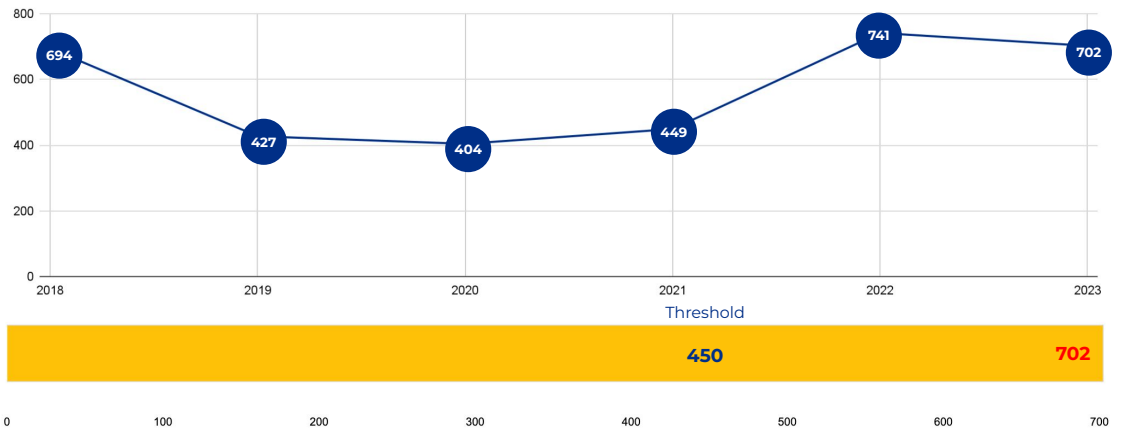


## PRIMARY CRITERIA #1: 2022-23 ENROLLMENT

2023 Enrollment  
**702**

Campus Type  
**MS**

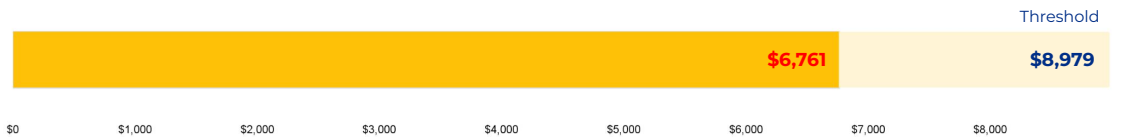
Enrollment Threshold  
**450**



	2018	2019	2020	2021	2022	2023
<b>Total Enrollment:</b>	694	427	404	449	741	702

## PRIMARY CRITERIA #2: FACILITY COST PER PUPIL

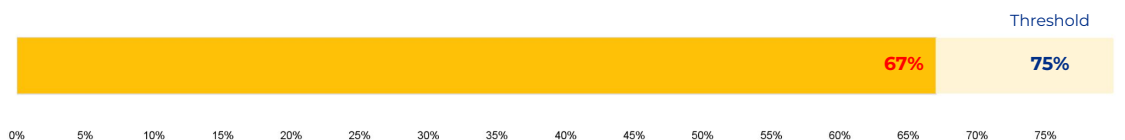
Cost Per Pupil  
**\$6,761**



## PRIMARY CRITERIA #3: 2022-23 FACILITY USE

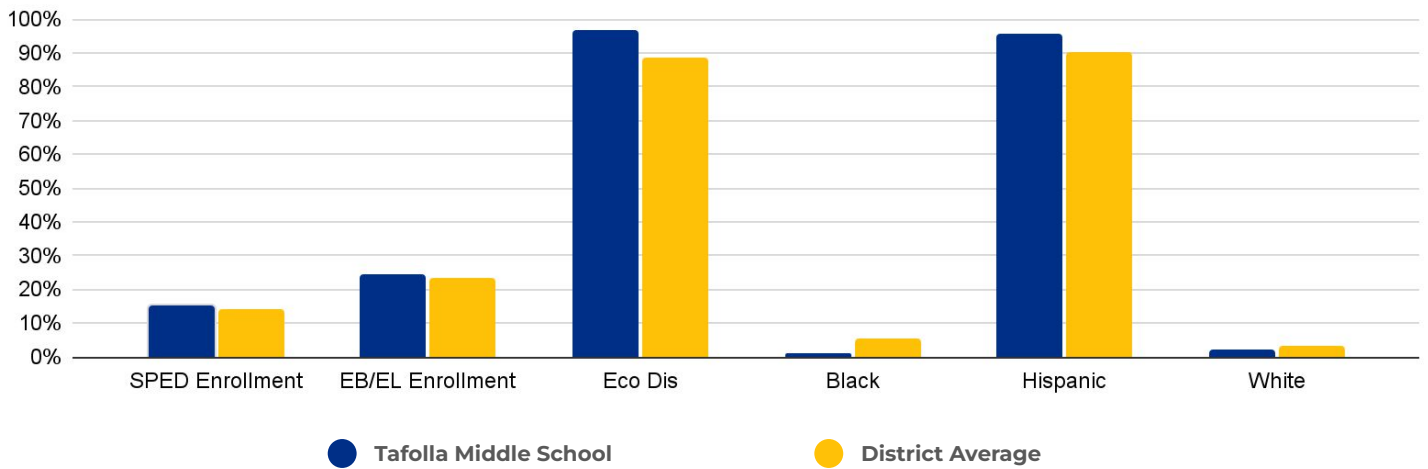
Functional Capacity  
**1,048**

Facility Usage  
**67%**

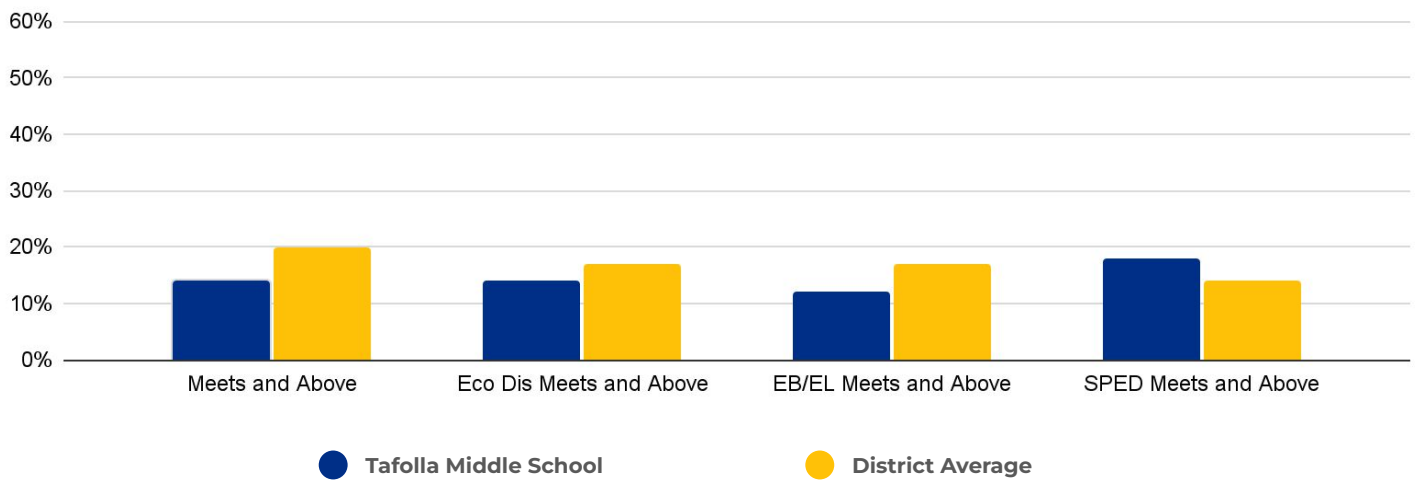


# Tafolla Middle School

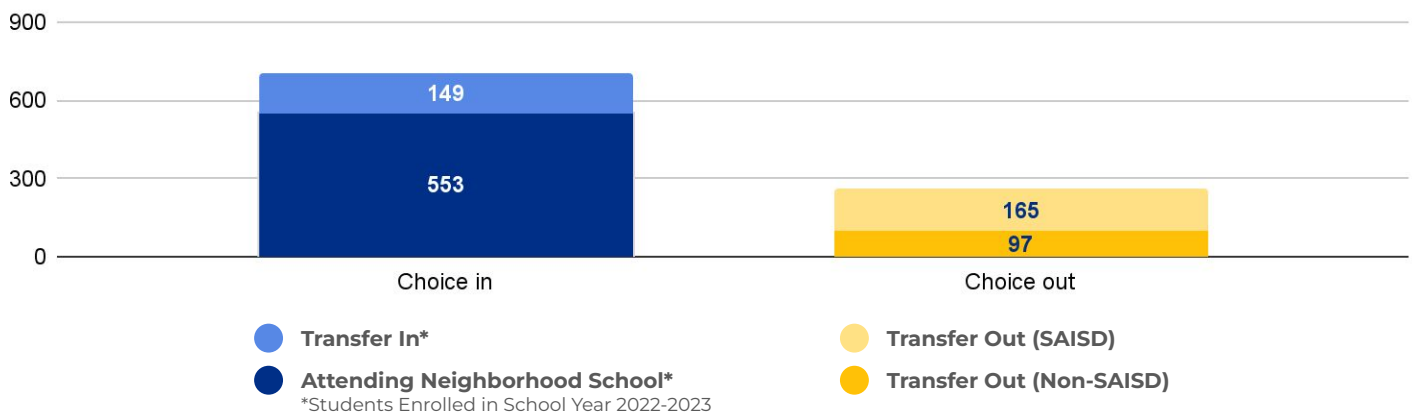
## DEMOGRAPHICS



## 2022 ACADEMIC PERFORMANCE



## 2022-23 CHOICE IN / CHOICE OUT



## BRIEF CRITERIA ANALYSIS

Tafolla does not meet the rightsizing threshold for its building utilization, but the school has consistently maintained enrollment of over 700 throughout the last two decades. There was no suitable sending or receiving school for Tafolla in the surrounding neighborhood, as the school could not accommodate all of the students from Rhodes or vice versa.